



Maritime Business Review

Abiding by the rules?: A sequential mixed-methods study on the determinants of regulatory compliance with maritime environmental legislation

Thea Freese, Michael Gille, John Struthers,

Article information:

To cite this document:

Thea Freese, Michael Gille, John Struthers, (2019) "Abiding by the rules?: A sequential mixed-methods study on the determinants of regulatory compliance with maritime environmental legislation", *Maritime Business Review*, Vol. 4 Issue: 1, pp.31-48, <https://doi.org/10.1108/MABR-09-2018-0034>

Permanent link to this document:

<https://doi.org/10.1108/MABR-09-2018-0034>

Downloaded on: 11 June 2019, At: 19:38 (PT)

References: this document contains references to 50 other documents.

To copy this document: permissions@emeraldinsight.com

The fulltext of this document has been downloaded 122 times since 2019*

Access to this document was granted through an Emerald subscription provided by All users group

For Authors

If you would like to write for this, or any other Emerald publication, then please use our Emerald for Authors service information about how to choose which publication to write for and submission guidelines are available for all. Please visit www.emeraldinsight.com/authors for more information.

About Emerald www.emeraldinsight.com

Emerald is a global publisher linking research and practice to the benefit of society. The company manages a portfolio of more than 290 journals and over 2,350 books and book series volumes, as well as providing an extensive range of online products and additional customer resources and services.

Emerald is both COUNTER 4 and TRANSFER compliant. The organization is a partner of the Committee on Publication Ethics (COPE) and also works with Portico and the LOCKSS initiative for digital archive preservation.

*Related content and download information correct at time of download.

Abiding by the rules?

Abiding by the
rules?

A sequential mixed-methods study on the determinants of regulatory compliance with maritime environmental legislation

31

Thea Freese

*School of Business and Enterprise, University of the West of Scotland, Paisley, UK
and Department of Business Studies, Hamburg University of Applied Sciences,
Hamburg, Germany*

Michael Gille

*Department of Business Studies, Hamburg University of Applied Sciences,
Hamburg, Germany, and*

John Struthers

*School of Business and Enterprise, University of the West of Scotland,
Paisley, UK*

Received 14 September 2018
Revised 29 January 2019
Accepted 18 February 2019

Abstract

Purpose – Increased political measures to protect the marine environment addresses a shipping industry characterised by strained financial resources, excess supply of capacity and consolidation. In addition, 5-15 per cent of industry participants are believed by shipping experts to neglect rules on vessel-source pollution to stay competitive within their industry and vis-à-vis other transport modes. This study aims to identify and quantify cost effects of maritime environmental legislation, to relate these with company characteristics and to investigate the impact of regulatory compliance.

Design/methodology/approach – A mixed-methods design was used to develop both a theoretical model of compliance costs effects and to quantify effect sizes. In total, 12 in-depth exploratory expert interviews were conducted and analysed. A theoretical framework emerged, which was evaluated, strengthened and fed with quantitative data from questionnaire data by 120 shipping companies. Partial least squares analysis was conducted to determine compliance cost effects.

Findings – It was found that organisational capacities played a significant role in determining compliance behaviour. Exterior determinants showed no significant correlation with legal compliance. This is a striking result, as it does not support achieving legal compliance with measures of strong enforcement.

Social implications – European transport policy-making depends on scientifically sound studies on the impact of policy. An in-depth impact assessment on environmental legislation for the maritime industry highlights mechanisms applicable to environmental policy-making in transport and helps in building policy that considers compliance concerns, company characteristics and the interconnectedness of different transport modes for a sound response to the tragedy of the commons.

Originality/value – Originality lies in the inductive development of a comprehensive theory on shipping companies' legal compliance behaviour and the empirical testing of this theory. Further value is derived from applying a sequential mixed-methods approach to the research problem,



showing both the worth and challenge in combining different methodologies to achieve sound research results.

Keywords Regulatory compliance, Marine environmental protection, Mixed-methods research, Compliance costs, Clean vessel operations, North and Baltic sea shipping

Paper type Research paper

Introduction

This paper studies the impact of legal compliance on compliance costs with maritime environmental legislation as part of a more comprehensive research project on compliance cost effects. The commercial shipping industry is characterised by increased possibilities to avoid regulation via moving assets that may easily be relocated to other jurisdictions, varying levels of enforcement of international rules in port states, global commons in the form of international waters where enforcement is hardly possible, at times colliding interests between flag and port states with regard to environmental protection and offering low-cost solutions to shippers and, according to Tan, “a generally secretive and fragmented nature” (Tan, 2006, p. 6). Regulatory avoidance and free-riding are inherent to the sector, a recent Organisation for Economic Co-operation and Development (OECD) report argues (OECD, 2014, p. 86). This international, hard-to-regulate-or-control industry is increasingly faced with legislative endeavours to protect the marine environment, particularly in specially protected areas such as the North and Baltic Sea. If shipping companies’ decisions are based on cost–benefit considerations, it is likely that incentives to violate cost-incurring environmental rules will increase with cost pressure.

The researchers briefly discuss advances in maritime environmental legislation and their cost effects, the concept of regulatory compliance and the associated rational choice approach. A model of compliance determinants developed inductively from qualitative data analysis and a review of prior studies is presented. A concise presentation of the methodology applied is ensued by a discussion of results of the quantitative study, involving partial least squares analysis of questionnaire data. Statistical results are discussed and compared with theoretical concepts. The present study serves to enhance knowledge of compliance behaviour and contributes to a fit-for-purpose assessment of existing and future maritime environmental legislation.

Novelty of this study stems from both the theoretical model of compliance determinants and empirical testing of the model. The path model is based on literature review – leading to a comprehensive sketch of compliance drivers specifically focused on the shipping industry – and knowledge gained from 12 in-depth expert interviews to enrich and refine that model. Empirical testing is done with data from 120 questionnaires distributed to owners and operators of commercial vessels in the North and Baltic Sea area. This research is relevant in providing a consolidated, consequentially organised model of determinants of compliance for the shipping industry based on prior studies, qualitative content analysis of primary interview data and statistical analysis of primary questionnaire data. Special considerations applicable to the shipping industry are explored, and the model developed stands as a first to empirically test determinants of compliance behaviour with maritime environmental legislation.

Maritime environmental legislation in the North and Baltic Sea area

Environmental legislation to protect sea areas from harmful vessel-source emissions has received increased attention in recent years. With the aim of fostering cleaner ship operations, stricter legislation has been passed on the national and international level. Rules on sulphur and nitrogen oxide emissions, the introduction of invasive alien species through

ballast water and other sources of pollution are currently being phased in or will soon come into force in the North and Baltic Sea area. Examples of such rules sorted by type of pollution are listed in [Table I](#). The law demands that measures must show positive effects, e.g. on the health of the marine environment and society, and in excess of potential negative economic and social effects, e.g. in the form of more expensive transport services (Marine Strategy Framework Directive, Art. 8). Compliance may lead to more efficient operations. It is, however, prone to increase costs to industry, thus raising the likelihood of deviant behaviour.

Abiding by the rules?

Costs of compliance with maritime environmental legislation

Estimated cost effects of maritime environmental legislation for vessel operations on the North and Baltic Sea stem from literature review and questionnaire data. Prior studies considering the combined cost effect of several environmental legal rules are difficult to come by. One study that accumulates costs of several measures was conducted by the OECD in 2003. Researchers estimated compliance costs at the time to reach around 3.5-6.5 per cent of a ship's operating costs (OECD, 2003, p. 5). Scorpecci estimates that compliance costs in 2004 reached up to 20 per cent of the vessel's revenue. He argues that with additional legislative measures, compliance costs will likely increase by 1.5 up to 3 times the amount of 2004, thus increasing the incentive for noncompliance (Scorpecci, 2004, p. 7). As these studies are quite dated, results may no longer be applicable. More recent studies usually consider a single legal endeavour. Several studies could be identified presenting cost estimates for compliance with stricter sulphur levels. Sampson *et al.* argue that the cost of compliance lies in the price differential between full compliance and noncompliance with legislation (Sampson *et al.*, 2016, p. 300). Bell *et al.* discuss several categories of noncompliance costs, namely, criminal liabilities (with rising fines and a rising willingness of regulatory agencies to prosecute), administrative sanctions (including suspension of licenses), clean-up costs (after pollution incidences; often exceeding the fines), civil liabilities (rather unlikely in the case of shipping) and adverse publicity (Bell *et al.*, 2013, p. 39 *et seq.*). The costs of noncompliance have been increasing in recent years, particularly driven by higher fines, increased controls, and a wider array of rules to follow. Taking sulphur

<i>Oily water</i> (Prohibition of all operational discharges of oil)	Applicable from 2002/2004/2005 (IMO, 1973; MEPC, 2002, 2004, 2005)
<i>Garbage</i> (Prohibition of all operational discharges of garbage)	Applicable from 2000 (MEPC, 1991; European Parliament and European Council, 2000; MEPC, 2013a)
<i>Hull coatings</i> (Prohibition of all hull coatings containing TBT)	Applicable from 2008 (IMO, 2008)
<i>Air pollution I</i> (Limitation of the amount of sulphur in fuel to 0.1%)	Applicable from 1 January 2015 (IMO, 2005)
<i>Air pollution II</i> (Mandatory energy-efficient operations lowering CO ₂ emissions)	Applicable from 2019 (MEPC, 2013b)
<i>Air pollution III</i> (Mandatory nitrogen oxide tier III requirements)	Applicable for new buildings from 2021 (MEPC, 2015)
<i>Sewage water</i> (Prohibition of all discharges)	Applicable from 1 June 2019 for new vessels and 2 June 2021 for existing vessels (MEPC, 2011)
<i>Ballast water</i> (Mandatory management systems)	Applicable from 8 September 2017 (IMO, 2017)

Table I.
Examples of maritime legislation by type of pollution applicable on the North and Baltic Sea (authors)

legislation as an example, the costs of compliance are represented in the price difference between operating on distillate fuel or operating on high sulphur fuel and risking sanctions. The price of noncompliance may thus be defined as the level of damages from formal and informal institutions multiplied by the risk of detection. Depending on study design, total vessel operation costs in North and Baltic Sea are estimated to increase by 6-40 per cent with the introduction of the sulphur emission control area (COMPASS, 2010; Notteboom *et al.*, 2010), indicating that the costs of a single measure may significantly exceed the dated OECD estimates. Studies on cost effects of NO_x tier III requirements foresee additional increases of 0.6-2.5 per cent (COMPASS, 2010) or €6,500-400,000 per vessel (EPA, 2012). Installation costs for a ballast water treatment system range from US\$100,000 to US\$1m, plus operating costs of US\$0.01-0.2 per ton of ballast water treated, depending on vessel size (GEF-UNDP-IMO GloBallast Partnerships Programme and IUCN, 2010). As study designs differ, these costs may not be aggregated, but the approximate range of compliance costs becomes evident. Other environmental rules are likely to be less costly, but add further pressure on an industry characterised by overcapacities (Morley, 2016). The 2003 OECD study calculated possible savings of up to \$400,000 a year for a noncompliant vessel compared to a fully compliant one (OECD, 2003, p. 5). With new maritime environmental rules becoming effective in the next years, behaviour formerly not unlawful will be subjected to fines, increasing the risk of noncompliant behaviour.

Cost accounting data collected through questionnaires suggest that while total costs stayed roughly the same between 2015 and 2017 for 36.2 per cent companies, they increased for 56.5 per cent of companies, with the largest group noticing an increase of some 5-10 per cent. Voyage costs have behaved similarly in 2015-2017, with some 9 per cent of companies even noticing a decrease and the majority experiencing slight increases in voyage costs. With a view to the future, however, voyage costs are expected by most shipping companies to increase by some 5-20 per cent until 2022 (Figure 1, *n* = 69). These figures may be explained by low fuel prices in the period since 2015, which alleviated effects of price increases due to low sulphur legislation, while, at the same time, future expectations for fuel prices are leading to anticipated rising bills. Among other considerations, the certainty of phased-in environmental legislation may also play a role in this expected increase.

With respect to individual measures, Figure 2 (*n* = 47) shows results of a ranking by most expensive measure, indicating clearly that air pollution legislation (specifically measures to curb SO₂ and NO_x emissions), ballast water legislation and legislation on the reduction of CO₂ emissions are deemed the most expensive by the industry, while legislation

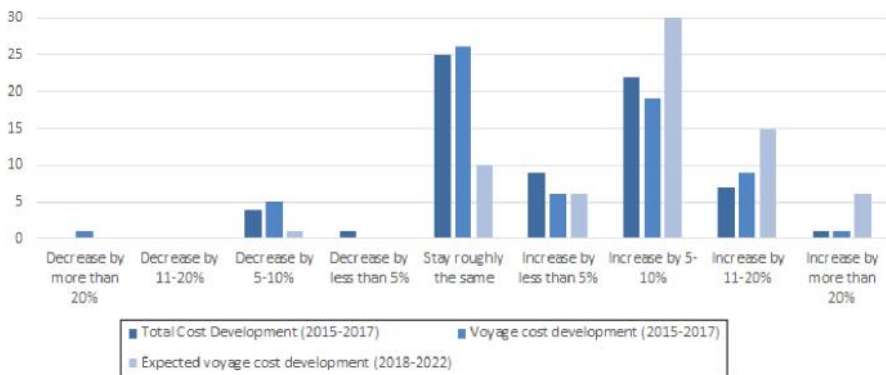


Figure 1. Development of total costs and voyage costs (2015-2017) and expected voyage cost development (2018-2022)

on noise pollution is deemed the least expensive (which makes sense as there are of yet no measures in place), followed by antifouling legislation. A ranking on cost expectations for the years until 2022 (Figure 3, $n = 35$) shows that the costs of ballast water legislation are expected to surpass the costs of air pollution legislation. An increased importance of measures on CO₂ reduction between 2017 and 2022 may also be conjured from Figures 2 and 3. Interestingly, despite its effect on costs, legislative compliance seems no significant determinant of freight rates for shipping companies. Other factors such as changes in the demand for transport capacity, changes in fuel costs irrespective of environmental legislation and changes in cargo-handling costs are having a greater influence on costs and prices of shipping companies than environmental legislation. This becomes apparent from Figure 4 that presents a ranking of factors by their influence on freight rates.

Abiding by the rules?

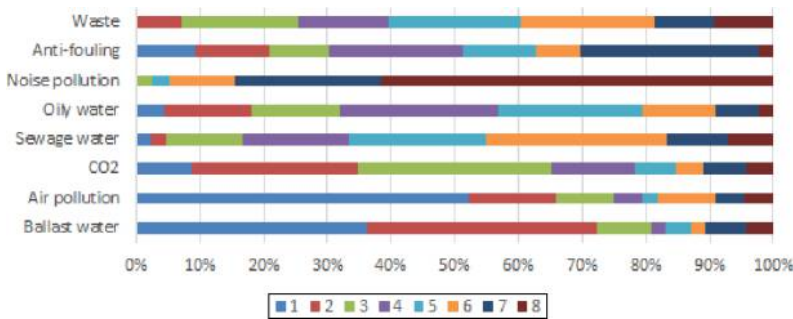


Figure 2.
Ranking by most expensive legislative measure (2015-2017)

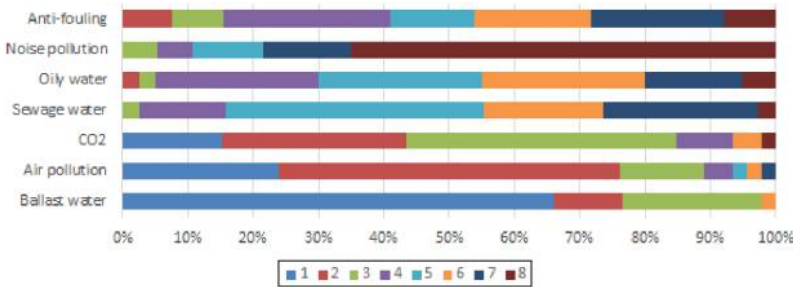


Figure 3.
Ranking by most expensive legislative measure (2018-2022)

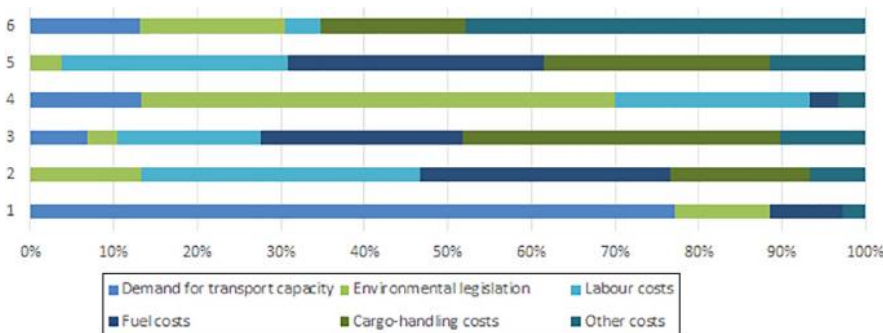


Figure 4.
Ranking of factors by influence on freight rates

Regulatory compliance

Definition of regulatory compliance

The concept of regulatory compliance applied here follows a letter of the law approach as dissociated from behavioural definitions used in the social sciences and is defined as the conformity of an organisation's behaviour with a prescribed legal rule (Mitchell, 1994, p. 30). Noncompliance is thus a deviation from prescribed legal behaviour. If one wants to measure all cost effects of legislation, however, changes of behaviour within the organisation leading to cost increases need to be considered, even if they do not lead to a fully compliant organisation. Recently, researchers have suggested replacing the concept of regulatory compliance with the concept of corporate social responsibility (CSR) (Snezhko and Coskun, 2019). This approach seems insufficient to study the behavioural effect of legislation. Ethical considerations may induce a company to do more or less than legally prescribed. CSR may thus influence regulatory compliance, but a compliance decision will depend on more than ethics, as described below. Current research is also conducted on contractarian environmental legislation, where regulators refrain from enforcing certain laws in exchange for an organisation's commitment to fulfil obligations not required by law. A thorough discussion of this decentralised approach to policy-making can be found in Dana (2018). It currently finds no application in the area of maritime environmental legislation and is thus not further discussed here. Raustiala and Slaughter provide a helpful definition, stating that at its roots, compliance is a concept of causality looking at the behavioural influences of legal rules (Raustiala and Slaughter, 2002, p. 539). Behaviour is relevant to the present research if it is directly or indirectly induced by maritime environmental legislation *and* leads to costs in terms of money, time or other resources. Where legislation has no effect on costs, it can be assumed that incentives for noncompliance are nil.

Compliance and rational choice

Following a law and economics approach, this work links regulatory compliance to rational choice theory. The principle of compliance as a cost–benefit calculation has been described in a fundamental work on the economics of crime by Becker and defined further by his student Ehrlich (Becker, 1968; Ehrlich, 1996). Applying a related definition by Posner, shipping companies are likely to “economize by buying less of a good or commodity when its price rises” (Posner, 1974, p. 763); specifically, they are likely to invest less in compliant behaviour if compliance becomes costlier, assuming that costs of noncompliance stay the same. Rational choice theory applies irrespective of whether compliance occurs willingly or unwillingly, termed “committed compliance” and “capitulative compliance” by McBarnet (2019). As stated above, however, costs of noncompliance may be increasing simultaneously. Simpson and Rorie present compliance behaviour as a rational choice of companies between several alternatives. Noncompliance thus occurs where the benefits of unlawful behaviour outweigh the costs of compliance (Simpson and Rorie, 2011, p. 60 et sqq.). Costs in this respect depend on preferences of individual decision-makers, as the value of morality, for example, differs between individuals. In this context, it needs to be noted that noncompliance may both be a product of action or inaction (Cohen and Simpson, 1997). When applying rational choice theory to compliance, limits to rationality need to be considered, such as a lack of access to information, individual characteristics of companies and circumstances. Simpson and Rorie thus propose an objective utility approach signifying that costs and benefits are “perceptual, rather than objective” (Simpson and Rorie, 2011, p. 61). Perceived costs and benefits of a certain legislative endeavour may differ between companies and may lead to dissociated behavioural outcomes. Rational choice theory tells

us that shipping companies' incentives to violate the rules are likely to increase with augmented cost pressure. Environmental pollution being an externality, companies would generally only take their individual costs, not the costs to society, into consideration (Phaneuf and Requate, 2017, p. 5).

Abiding by the
rules?

Practical relevance of noncompliance with maritime environmental legislation

Studies on environmental compliance exist for organisations in general (i.e. writings on corporate crime) but are very rare for the commercial shipping industry, with the exclusion of fisheries, where the study of overfishing has received increased attention. This research gap may be due to the hard-to-grasp characteristics of the industry discussed above. A rare exception is the above-mentioned 2003 OECD report, estimating that around 10-15 per cent of the world fleet is operated "in full contravention to the IMO's body of environmental regulations" (OECD, 2003, p. 4). These numbers may, in the meantime, have become outdated, and the report provides no distinction between different company sizes, flag states, areas of operation or other but gives a vague indication that noncompliance with maritime environmental legislation may be of relevance. Further evidence on the practical relevance of noncompliance stems from the annual reports of the Paris MoU on Port State Control. The 2016 report shows that pollution is the number three reason for detention of vessels in European harbours. Noncompliance is regularly found with respect to rules on oily water (1.7 per cent of deficiencies), sewage water (0.8 per cent), garbage (1.3 per cent) and air pollution (1.0 per cent), while unlawful anti-fouling coatings are only detected in a negligible number of cases (Paris MoU, 2017, p. 48). Ballast water systems do not yet figure in the 2016 report, as they only became mandatory in September 2017. As port state control officers mostly control vessels, particularly suspicious of noncompliance, i.e. black-listed vessels, these numbers provide limited evidence on the overall level of compliance with environmental legislation within the shipping industry. Data on compliance behaviour have been measured via questionnaires to build a compliance indicator as described below.

Mixed-methods study

Method of the study

The present study is exploratory in nature. A mixed-methods approach was chosen to facilitate the generation and testing of an original theoretical framework to investigate the research problem. In total, 12 in-depth expert interviews of 60-120 min length have been conducted by the researchers in 2015 and 2016 to identify drivers of environmental compliance, enhance the depth of knowledge on existing determinants and highlight cases of variable interdependency. Experts were purposefully sampled based on their superior knowledge on issues of maritime environmental legislation. Data acquired were fully transcribed, anonymised and translated into English where necessary. Guidance questions were related to the shipping companies' level of knowledge and understanding about environmental legislation, their motivations to comply and the effectiveness of control systems and technical compliance options. A theoretical framework was built to serve as a basis for confirmatory quantitative analysis. A 12-page-long, 129-item self-completion questionnaire was drafted and distributed via personalised email to commercial shipping companies with offices in countries bordering the North and Baltic Sea. From a full sample of 829 companies, 149 questionnaires were received and 121 met basic criteria to be used for evaluation.

Data analysis was conducted using SPSS, Excel and SmartPLS. Multivariate analysis tools were chosen to test complex relationships between compliance variables. Partial least squares-structural equation modelling (PLS-SEM) is applied here, which is both able to explore patterns in the data and test the *a priori* established theories as laid down in the theoretical framework.

Theoretical framework

The development of the theoretical framework from qualitative content analysis and systematic review of prior studies, as presented in Figure 5, is described in detail in a working paper by Freese and Gille, available on Researchgate (Freese and Gille, 2017), and will not be detailed here. It suffices to point out that 13 determinants were inductively developed, which were clustered under three theoretical concepts, namely, individual motivations, organisational capacities and exterior determinants. Items in the questionnaire relate to these theoretical concepts, and data on proxy variables are collected to evaluate the statistical significance of theoretical relations.

Path model with latent variables

A path model developed based on the theoretical framework can be seen in Figure 6. Path models are widely applied to visualise variable relationships and hypotheses in SEM (Hair et al., 2011). Both measurement theory and structural theory are shown in the graph. In this context, a formative measurement model is applied to identify drivers of compliance. Multi-item scales are used to increase predictive validity in line with recommendations by Diamantopoulos et al. (2012). Cronbach's alpha was used to

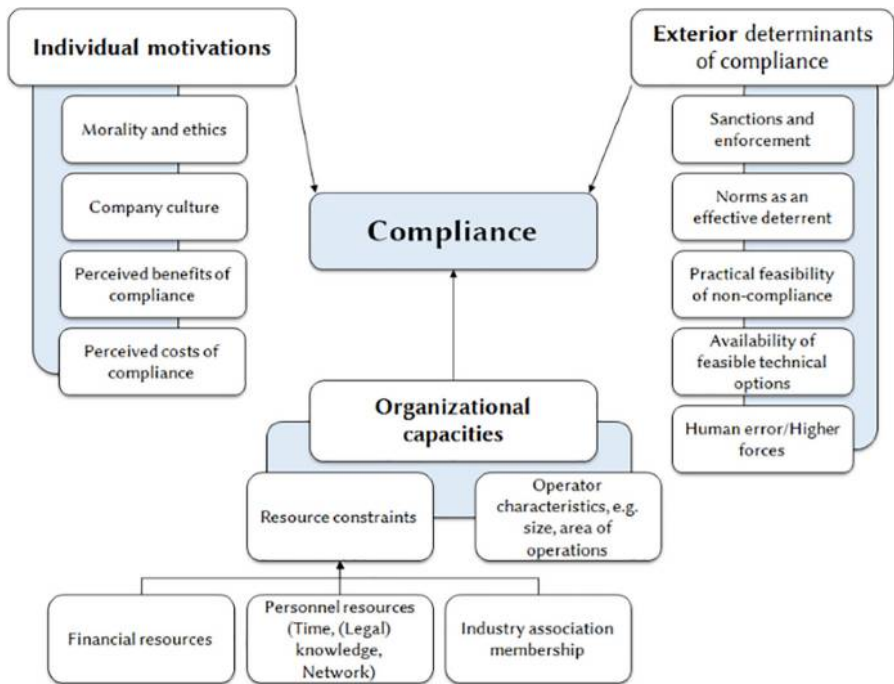
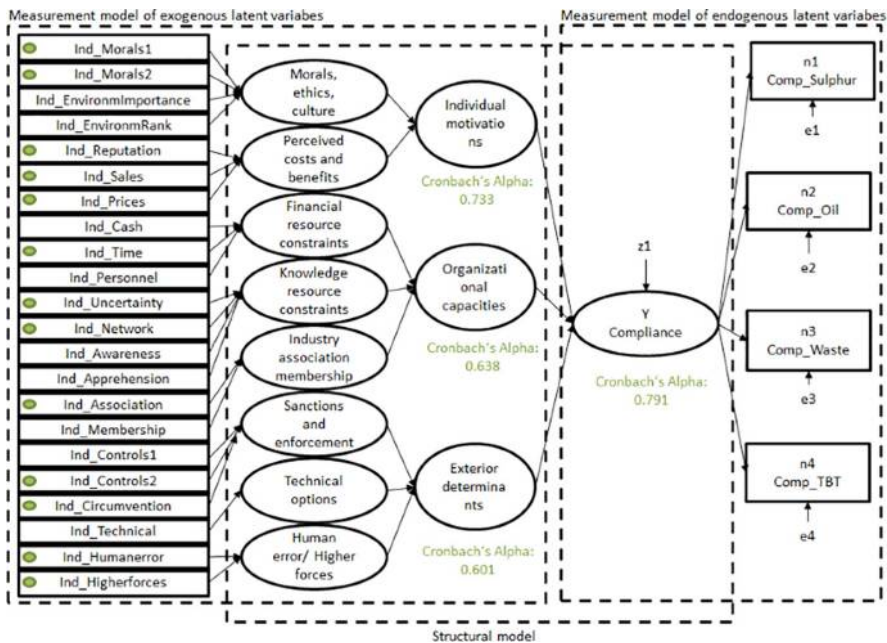


Figure 5.
Theoretical framework of determinants of compliance based on exploratory qualitative study and literature review (authors)



Abiding by the rules?

Figure 6.
Path model
(structural and
measurement model)

determine reliable proxy variables. Indicators were eliminated until Cronbach's Alpha exceeded 0.6, leading to the exclusion of some measurements. "Individual motivations" eventually relies on five indicators with a Cronbach's alpha of 0.733, "organisational capacities" relies on four indicators with a Cronbach's alpha of 0.638 and "Exterior determinants" relies on four indicators with a Cronbach's alpha of 0.601. The researchers refrain from regression analysis based on sum scores (i.e. determining latent variable scores from average values of indicators) for the concepts, as it cannot be assumed that indicator weights are equal. Instead, partial least squares is used as described below.

Measures

Determinants of compliance were identified from literature research and expert interviews. Many of the drivers constitute complex concepts that are defined here as latent or unobservable variables. These constructs may not be directly measured but must be studied indirectly by using indicators. Proxy variables were created and combined to form a single composite score. Measurement error from poorly worded questions or misunderstandings was aimed to be reduced by using several items to measure a concept. While the compliance index was computed from five-point Likert scales, data on compliance attitudes were measured on four-point Likert scales, not allowing for a "middle option" but forcing a taking of sides. Likert items of all scales were symmetric around a middle item and equidistant and could thus be used in SEM (Hair *et al.*, 2018, p. 9). Control variables included were company size, area of operations, average vessel age and type of operations.

Missing data

The sample consists of 121 commercial shipping companies active at least at times in the specially protected areas of the North and Baltic Sea. As data on compliance behaviour are particularly sensitive, a limited number of companies participating in the study have provided answers to all questions on compliance. Constructs are based on a minimum of 36 companies providing data. Companies having provided information on less than 85 per cent of indicators were deleted from the sample for the purpose of this analysis, leaving 43 companies in the data set. Hair *et al.* suggest using means of power analysis on the part of the model with the largest number of predictors as an indicator for minimum sample size (Hair *et al.*, 2018, p. 24). Following calculations by Cohen, with the maximum number of independent variables being five, 37 observations would be needed to achieve a statistical power of 80 per cent for detecting R^2 values of at least 0.25 (with a 10 per cent probability of error) (Cohen, 1992). The sample size is thus deemed acceptable in the light of this being a study on a sensitive topic in a seclusive industry.

Missing data are dealt with in two different ways. Mean value replacement is applied if less than 5 per cent of values are missing for an indicator. Other missing data are dealt with by pairwise deletion. Although this might lead to biased results based on different sample sizes per indicator, it seems the best choice in light of the data's many missing values. In these cases, mean value replacement would lead to a decrease in variability and thus explanatory power of the data and case-wise deletion would further shrink the already small dataset.

Data analysis

PLS was chosen as a modelling technique, as it proves apt to deal with specific challenges of the data at hand. PLS consists of a series of ordinary least squares analyses and is a two-stage technique where first the outer model is evaluated in terms of reliability and validity and then the inner model is assessed. This structural equation modelling technique is able to handle small sample sizes, has minimal demand on measurement scales, can deal with violations of the normality distribution assumption and is robust with respect to multicollinearity (Wold *et al.*, 1984). It also treats proxy variables as approximations of the constructs they replace, which is very fitting in this study, and makes it a superior method to covariance-based SEM (CB-SEM) for the study at hand (Hair *et al.*, 2018, p. 16). PLS may both be used to test theories and find relationships between variables. It may be distinguished from more traditional methods of data analysis such as multiple regression in being able to analyse both manifest and latent variables alike. Unobservable variables may thus be measured indirectly (Hair *et al.*, 2018, p. 3). Measurement errors in observed variables may also be accounted for (Chin, 1998). The characteristics and benefits of PLS-SEM are well explained by Hair *et al.* (2018). One drawback is the lack of a global goodness-of-fit measure. Henseler and Sarstedt introduced the standardised root mean square residual, SRMR, which is used here to measure goodness of fit (Henseler and Sarstedt, 2013). The consistency of parameter estimates is another issue that needs to be accounted for. Parameter accuracy is, however, viable, when measurement models meet certain standards, i.e. having four or more indicators with indicator loadings of ≥ 0.7 (Astrachan *et al.*, 2014). These standards must be taken into account to ensure parameter accuracy.

Social-desirability bias and the compliance index

Self-reported compliance attitudes and compliance behaviour are likely to be influenced by social-desirability bias (SDB), leading to underreporting of noncompliance (Brace, 2013, p. 210). Asked for their perceptions on compliance, 95.3 per cent of participants reported that

the phrase “My company would not do anything that is against the law” was “absolutely true”. Asking study participants for honest answers will not help in overcoming the bias, research shows (Phillips and Clancy, 1972). Techniques used in this survey are the omission of a respondent identifier, assurances of confidentiality, anonymous data collection via an online survey tool and indirect questioning. In a review of prior studies, Fisher found that indirect questioning reduced SDB on variables subject to social influence, and that subjects effectively projected their beliefs and evaluations to indirect response situations (Fisher, 1993). Brace presents indirect questioning as a viable method to overcome SDB but highlights the danger that the researcher may not be sure about the percentage of participants who projected their own behaviour onto others and participants who honestly reported their judgement of others (Brace, 2013, p. 217). Being aware of this danger, indirect questioning was used to determine levels of compliance and build a compliance index as shown in Figure 7. As overall compliance levels were estimated to be quite high by experts at the interview stage, compliance levels asked for in the questionnaires ranged from “less than 70 per cent” to “more than 95 per cent”. Projecting the indirect data onto the companies themselves, a compliance index was calculated for each company. It is important to notice that the underlying scale is not equidistant. An equidistant five-point Likert-scale would have yielded much less information, as the researcher already knew from expert interviews what the relevant compliance categories were likely to be. All other Likert scales in the study are equidistant. The histogram shows a distribution with $n = 36$ (as many participants refrained from answering questions on compliance altogether), a mean of 4.04 (signifying overall estimated compliance levels around 95 per cent, which is well in line with estimates from prior studies and expert interviews), a standard deviation of 1.144 and a non-normal distribution with a negative skew. It becomes apparent that although the majority of companies in the sample exhibit very high levels of compliance, a small group of outliers can

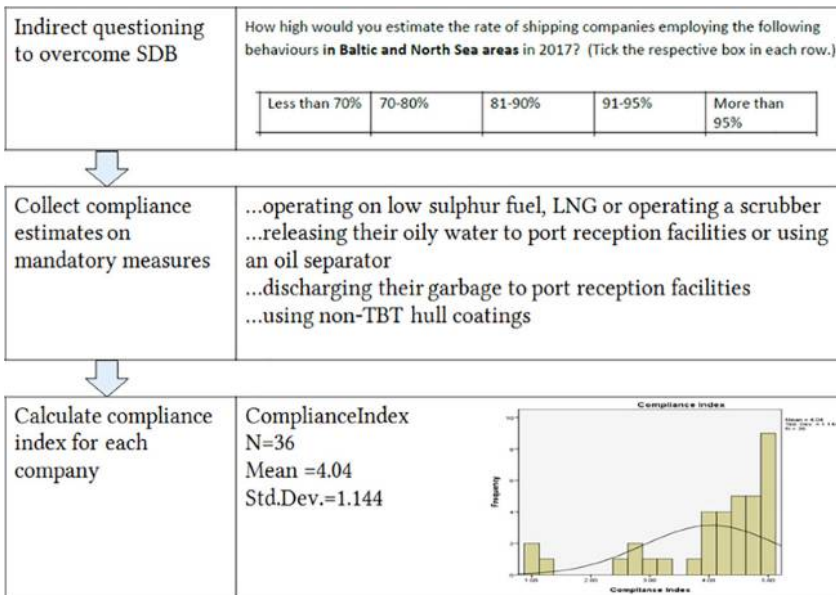


Figure 7. Compliance index calculation

be found at the left-hand side of the graph, indicating low levels of compliance. Cronbach's alpha is 0.791, indicating internal consistency of the scale.

Results

Compliance rates

Figure 8 ($n = 37$) shows the compliance rate by type of pollution as developed from questionnaire data. It becomes apparent that for some types of pollution, compliance levels are estimated to be higher than for other types of pollution. While compliance with legislation on oil pollution, the prohibition of TBT for hull-coatings and legislation on waste pollution are deemed to be complied with by more than 95 per cent of companies on average, a significant number of participants estimate the compliance with sulphur legislation to be around 91-95 per cent, while most estimate compliance rates to exceed 95 per cent as well. Compliance with sewage water legislation exhibits a different pattern than all other initiatives, as it will only enter into force in 2019 and serves as a control variable here. Interestingly, a small number of companies accounting for some 10-15 per cent of the sample estimate compliance rates for all mandatory measures to be below 70 per cent. These companies are likely to be noncompliant themselves at least occasionally, following the theory of indirect questioning. This noncompliance rate seems to be in line with the 5-15 per cent estimated by experts at the interview stage.

Compliance drivers

PLS-SEM was conducted as described above with results shown in Figure 9. Histograms of constructs show approximately bell-shaped symmetric curves. While PLS-SEM does not assume a certain data distribution, it is important to assure that data distribution is not extremely non-normal, as that would lead to difficulties in assessment of parameter weights. Skewness and kurtosis were used here to assess how data deviates from normality with a value lower than -1 or higher than $+1$ for both considered non-normal. The construct "motivations" is not normally distributed. The nonnormality of the construct stems from extremely non-normal distributions for indicators Ind_Morals1 and Ind_Morals2 as can be seen by their skewness and kurtosis. These indicators were thus eliminated from the set, leaving three indicators to explain the construct "motivations" with a healthy Cronbach's Alpha of 0.771. Other indicators were not deleted even if their outer loadings were slightly below 0.7, so as not to decrease content validity (Hair *et al.*, 2018, p. 113), but the construct "exterior determinants" was split into the two concepts "Sanctions and Enforcement" and "Human error/Higher forces" to increase content validity. No indicator showed outer loadings below 0.3, as these had already been removed when considering Cronbach's alpha in preparing the data for analysis with PLS.

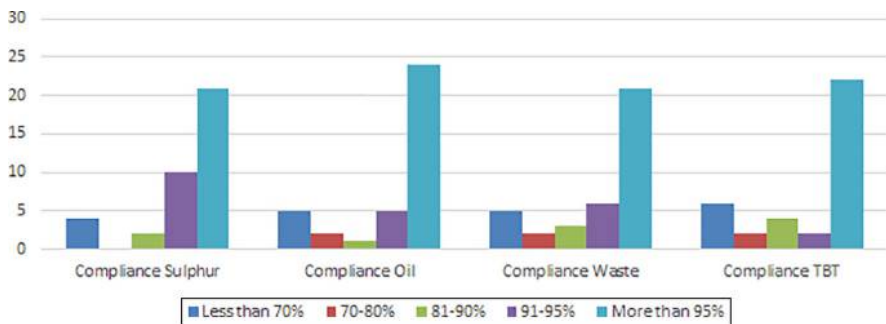
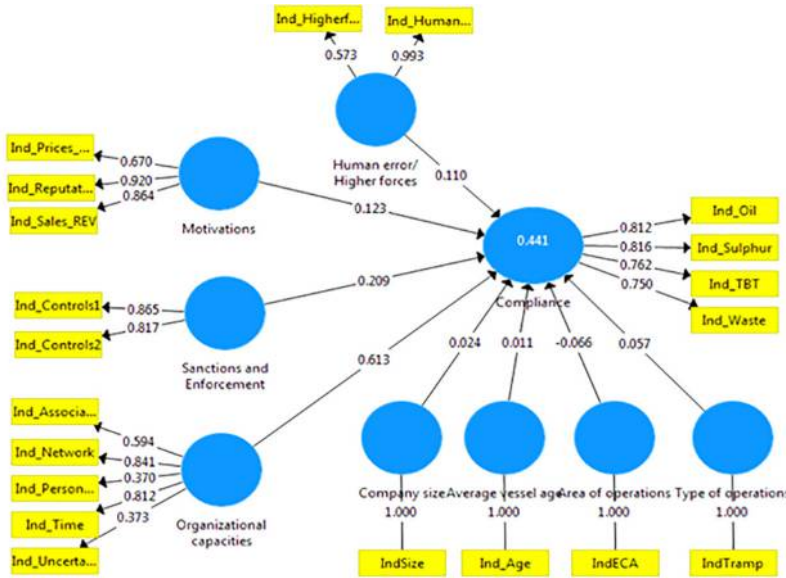


Figure 8.
Compliance with mandatory legislation on the North and Baltic Sea



	Original Sampl...	Sample Mean (...)	Standard Devia...	T Statistics (O...	P Values
Area of operations -> Compliance	-0.066	-0.065	0.145	0.454	0.650
Average vessel age -> Compliance	0.011	0.046	0.247	0.046	0.963
Company size -> Compliance	0.024	-0.014	0.218	0.112	0.911
Human error/Higher forces -> Compliance	0.110	0.110	0.224	0.492	0.623
Motivations -> Compliance	0.123	0.079	0.258	0.479	0.632
Organizational capacities -> Compliance	0.613	0.581	0.228	2.683	0.008
Sanctions and Enforcement -> Compliance	0.209	0.212	0.160	1.303	0.193
Type of operations -> Compliance	0.057	0.076	0.183	0.311	0.756

Figure 9. Results of PLS analysis and bootstrapping on determinants of compliance

The R^2 value of 0.441 shows that around 44.1 per cent of variance in compliance behaviour may be explained by the exogenous latent variables. According to Ringle *et al.*, this can be described as a moderate effect (Ringle *et al.*, 2009). Model fit is thus far from perfect, but the model has moderate explanatory value. Not all path estimates are statistically significant. Path coefficients have standardised values between -1 and $+1$. Any value close to 0 shows a weak relationship that is usually not statistically significant. As in indication, it can be assumed that values above 0.2 are significant, which only is the case for the concept “organisational capacities” with a path value of 0.613 and “sanctions and enforcement” with a path value of 0.209. T-values and p -values determined through bootstrapping are shown in Figure 9. With a p -value below 0.01, organisational capacities were significant at the 1 per cent level, while sanctions and enforcement could not be shown to be statistically relevant. As can be seen from the outer loadings below, particularly the indicators *Ind_Time* and *Ind_Network* have high loading factors on the concept “organisational capacities”, indicating that a lack of time and a lack of a network with other companies might be significantly related to a lower level of compliance with environmental legislation. The remaining two concepts determined from expert interviews and literature review could not

be found to show a statistically significant relation with compliance rates. Instead, other drivers must explain deviations in compliance levels. Similar to other latent constructs, no significant relation could be found between control variables and compliance.

No universal measure for model fit is known for PLS. Root mean square residual covariance (SRMR) is used as one measure of model fit here. The model has an SRMR value of 0.127. A value of 0 generally indicates perfect fit, while a value below 0.08 indicates good fit when applied to CB-SEM models. Hair *et al.* argue however that this threshold is too low for PLS-SEM and propose applying a higher (though unspecified) threshold (Hair *et al.*, 2018, p. 193). SRMR does not indicate very good model fit. RMSttheta is considered as a second measure of model fit with a value above 0.12, indicating a lack of fit. The value calculated in Smart PLS for the model at hand is RMSttheta = 0.246. This second measure indicates poor model fit. Further analysis and changes in model specification seem thus necessary.

Reliability analysis

Measures of construct reliability are shown in the table below. As in this study new measures for concepts are developed, a Cronbach's Alpha of close to 0.6 is deemed acceptable, in accordance with assessments by Nunnally (Nunnally, 1978) and Hair (2018, p. 24). With well-defined constructs, a minimum of 0.7 is demanded to describe reliability. Composite reliability tends to overestimate reliability slightly, while Cronbach's Alpha might underestimate reliability for the type of study at hand, involving Likert scales with few points. Hair *et al.* estimate that true reliability estimates lie somewhere between these indicators (Hair *et al.*, 2018). Following that argument, concepts are shown to be reliable with composite reliability above 0.7 for all concepts and Cronbach's Alpha above or close to 0.6 for all concepts. These measures are comparable to other exploratory studies (Table II).

Main findings, limitations and further research

Study results show that organisational capacities of a shipping company, particularly available time to collect and apprehend legal information, a strong network with other companies, and membership in an industry association, are statistically significant and positively correlated with increased levels of compliance with maritime environmental legislation. All other constructs that were developed from expert interviews and prior studies could not be found to have statistically significant effects. These results are particularly striking in the case of controls and enforcement, which is traditionally seen as the main driver of compliance in economic theory. This driver, despite a significant loading factor on compliance, did not withstand statistical scrutiny of empirical data. The main

Table II.
Measures of
construct reliability
(authors)

Constructs	Cronbach's alpha	Rho_A	Composite reliability	Average variance
Area of operations	1.000	1.000	1.000	1.000
Average vessel age	1.000	1.000	1.000	1.000
Company size	1.000	1.000	1.000	1.000
Compliance	0.795	0.803	0.865	0.617
Human error/Higher forces	0.639	2.865	0.781	0.657
Motivations	0.779	0.943	0.863	0.681
Organisational capacities	0.595	0.692	0.748	0.399
Sanctions and enforcement	0.589	0.596	0.829	0.708
Type of operations	1.000	1.000	1.000	1.000

research outcome is that companies with more resources at hand fare better in complying with environmental rules than companies with less available resources. These findings are however not statistically linked to company size, signifying that both larger and smaller shipping enterprises may be endowed with the necessary resources to make for a law-abiding market player. It seems that legal compliance is something that a company must be able to afford and that a player may consciously invest in by investing in personnel specifically tasked with following legal developments and building up relations with other companies to exchange information on new rules. Also, paying for industry association membership and making use of both information and relations will be strongly correlated with environmental compliance.

The rather poor overall model fit may be explained by a lack of correlation between compliance and compliance drivers identified, but may also be an effect of measurement errors, errors in translating the latent concepts into viable proxy variables or may be a result of the small sample size. Also, instrumentation of the questionnaire to receive a desired outcome is possible, where participants overestimate compliance costs and underestimate noncompliant behaviour to discourage further political involvement in the industry. The results are not atypical for exploratory studies, where tentative first steps are made to identify relationships between abstract concepts and much still needs to be learned in terms of describing and measuring the latent concepts. Also, the research shows the benefits of conducting mixed-methods research. The theoretical concept presented above represent a convincing outcome of thorough qualitative research but does not seem to withstand statistical scrutiny.

Next steps would be the further development of indicators to describe latent variables and a further search for explanatory factors of compliance that are not represented in the theoretical framework so far. Also, statistical analysis based on a larger sample size would be valuable to improve the analysis of compliance drivers and to further the understanding of regulatory compliance as a measure to improve environmental legislation.

References

- Astrachan, C.B., Patel, V.K. and Wanzenried, G. (2014), "A comparative study of CB-SEM and PLS-SEM for theory development in family firm research", *Journal of Family Business Strategy*, Vol. 5 No. 1, pp. 116-128.
- Becker, G.S. (1968), "Crime and punishment: an economic approach", in *The Economic Dimensions of Crime*, Springer, pp. 13-68, available at: http://link.springer.com/chapter/10.1007/978-1-349-62853-7_2
- Bell, S., McGillivray, D. and Pedersen, O. (2013), *Environmental Law*, 8th ed., Oxford University Press.
- Brace, I. (2013), *Questionnaire Design: How to Plan, Structure and Write Survey Material for Effective Market Research*, Kogan Page Publishers.
- Chin, W. (1998), "The partial least squares approach to structural equation modeling".
- Cohen, J. (1992), "A power primer", *Psychological Bulletin*, Vol. 112 No. 1, pp. 155-159.
- Cohen, M.A. and Simpson, S.S. (1997), "The origins of corporate criminality: rational individual and organizational actors", *Debating Corporate Crime*, Anderson Publishing Co, Cincinnati, pp. 33-51.
- COMPASS (2010), "The COMPetitiveness of EuropeAN short sea freight shipping compared with road and rail transport. performed by transport and mobility leuven, supported by EU commission through DG ENV".

- Dana, D.A. (2018), "The new 'contractarian' paradigm in environmental regulation", *The Theory and Practice of Command and Control in Environmental Policy*, Routledge, pp. 51-75, available at: www.taylorfrancis.com/books/e/9781351769570/chapters/10.4324/97813515197296-4
- Diamantopoulos, A., Sarstedt, M., Fuchs, C., Wilczynski, P. and Kaiser, S. (2012), "Guidelines for choosing between multi-item and single-item scales for construct measurement: a predictive validity perspective", *Journal of the Academy of Marketing Science*, Vol. 40 No. 3, pp. 434-449.
- Ehrlich, I. (1996), "Crime, punishment, and the market for offenses", *The Journal of Economic Perspectives*, Vol. 10 No. 1, pp. 43-67.
- EPA (2012), *Economic Impact Assessment of a Nitrogen Emission Control Area at the North Sea*, Environmental Protection Agency, Danish Ministry of the Environment, København.
- European Parliament and European Council (2000), "Directive 2000/59/EC of the European Parliament and of the Council of 27 November 2000 on port reception facilities for ship-generated waste and cargo residues", Official Journal of the European Communities.
- Fisher, R.J. (1993), "Social desirability bias and the validity of indirect questioning", *Journal of Consumer Research*, Vol. 20 No. 2, pp. 303-315.
- Freese, T. and Gille, M. (2017), "Determinants of compliance with Maritime environmental legislation: a model developed from exploratory qualitative data (working paper)", available on Researchgate, doi: [10.13140/RG.2.2.25396.96646](https://doi.org/10.13140/RG.2.2.25396.96646).
- GEF-UNDP-IMO GloBallast Partnerships Programme and IUCN (2010), "Economic assessment for ballast water management: a guideline", IMO, available at: http://globallast.imo.org/wp-content/uploads/2014/11/Mono19_English.pdf (accessed 20 March 2017).
- Hair, J.F., Ringle, C.M. and Sarstedt, M. (2011), "PLS-SEM: indeed a silver bullet", *Journal of Marketing Theory and Practice*, Vol. 19 No. 2, pp. 139-152.
- Hair, J.F., Jr, Hult, G.T.M., Ringle, C.M. and Sarstedt, M. (2018), *A Primer on Partial Least Squares Structural Equation Modeling (PLS-SEM)*, SAGE Publications Ltd, available at: <https://uk.sagepub.com/en-gb/eur/a-primer-on-partial-least-squares-structural-equation-modeling-pls-sem/book244583> (accessed 26 March 2018).
- Henseler, J. and Sarstedt, M. (2013), "Goodness-of-fit indices for partial least squares path modeling", *Computational Statistics*, Vol. 28 No. 2, pp. 565-580.
- IMO (1973), "International convention for the prevention of pollution from ships, 1973 (MARPOL)".
- IMO (2005), "Protocol of 1997 to amend the international convention for the prevention of pollution from ships of 2 November 1973, as modified by the protocol of 17 February 1978", (London, 26 September 1997) (New Annex VI – Regulations for the Prevention of Air Pollution from Ships).
- IMO (2008), "International convention on the control of harmful anti-fouling systems on ships (AFS convention)".
- IMO (2017), "International convention for the control and management of ships' ballast water and sediments (BWM convention)".
- McBarnet, D. (2019), "When compliance is not the solution but the problem: from changes in law to changes in attitude", Centre for Tax System Integrity (CTSI), Research School of Social Sciences.
- MEPC (1991), "Resolution mepc.36(28) adopted by the marine environment protection committee on 17 October 1989 - adoption of amendments to the annex of the protocol of 1978 relating to the international convention for the prevention of pollution from ships, 1973 (amendments to annex v of marpol 73/78)".
- MEPC (2002), "Resolution MEPC . 101 (48) adopted on 11 October 2002 identification of the wadden sea as a particularly sensitive sea area".
- MEPC (2004), "Resolution MEPC . 121(52) adopted on 15 October 2004 designation of the Western European waters as a particularly sensitive sea area".
- MEPC (2005), "Resolution MEPC . 136(53) adopted on 22 July 2005 designation of the Baltic sea area as a particularly sensitive sea area", Annex 24.

- MEPC (2011), "Resolution MEPC . 200(62) adopted on 15 July 2011 amendments to the annex of the protocol of 1978 relating to the international convention for the prevention of pollution from ships, 1973 (special area provisions and the designation of the baltic sea as a special area under MARPOL annex IV)".
- MEPC (2013a), "Resolution MEPC.201(62) adopted on 15 July 2011 amendments to the annex of the protocol of 1978 relating to the international convention for the prevention of pollution from ships, 1973 (revised marpol Annex V)".
- MEPC (2013b), "Resolution MEPC. 203 (62) adopted on 15 July 2011 amendments to the annex of the protocol of 1997 to amend the international convention for the prevention of pollution from ships, 1973, as modified by the protocol of 1978 relating thereto (inclusion of re gulations on energy efficiency for ships in MARPOL annex VI)".
- MEPC (2015), "Resolution MEPC.251(66) (adopted on 4 April 2014) amendments to the annex of the protocol of 1997 to amend the international convention for the prevention of pollution from ships, 1973, as MODIFIED by the PROTOCOL of 1978 relating hereto".
- Mitchell, R.B. (1994), *Intentional Oil Pollution at Sea: Environmental Policy and Treaty Compliance*, MIT Press, Cambridge.
- Morley, H.R. (2016), "Container shipping overcapacity forecast to worsen", *Journal of Commerce*, available at: www.joc.com/maritime-news/container-lines/container-shipping-overcapacity-forecast-worsen_20161102.html (accessed 30 March 2017).
- Notteboom, T., Delhay, E. and Vanherle, K. (2010), "Analysis of Consequences of Low Sulphur Fuel requirements", ITMMA-Universiteit Antwerpen Transport&Mobility, commissioned by European Community Shipowners' Associations (ECSA).
- Nunnally, J.C. (1978), *Psychometric Theory*, McGraw-Hill, New York, NY.
- OECD (2003), "Cost savings stemming from non-compliance with international environmental regulations in the Maritime sector", Maritime Transport Committee.
- OECD (2014), "International regulatory Co-operation and international organisations the cases of the OECD and the Imo: the cases of the OECD and the Imo", OECD Publishing.
- Paris MoU (2017), "2016 Paris MoU annual report 'seafarers matter'".
- Phaneuf, D.J. and Requate, T. (2017), *A Course in Environmental Economics – Theory, Policy, and Practice*, Cambridge University Press, Cambridge.
- Phillips, D.L. and Clancy, K.J. (1972), "Some effects of 'social desirability' in survey studies", *American Journal of Sociology*, Vol. 77 No. 5, pp. 921-940.
- Posner, R.A. (1974), "Economic approach to law", *Texas Law Review*, Vol. 53, p. 757.
- Raustiala, K. and Slaughter, A.-M. (2002), "Chapter 28: International law, international relations and compliance", *The Handbook of International Relations*, SAGE Publications, Thousand Oaks, CA.
- Ringle, C.M., Sinkovics, R.R. and Henseler, J. (2009), "The use of partial least squares path modeling in international marketing", *New Challenges to International Marketing*, Emerald Group Publishing Limited, pp. 277-319, available at: www.emeraldinsight.com/doi/abs/10.1108/S1474-7979%282009%290000020014
- Sampson, H., Bloor, M., Baker, S. and Dahlgren, K. (2016), "Greener shipping? A consideration of the issues associated with the introduction of emission control areas", *Maritime Policy and Management*, Vol. 43 No. 3, pp. 295-308.
- Scorpecci, D. (2004).: "Economic advantages of non-compliance with pollution regulations", NATSHIP, Presented at the NATSHIP, Melbourne.
- Simpson, S.S. and Rorie, M. (2011), "Motivating compliance: economic and material motives for compliance", in *Explaining Compliance: Business Responses to Regulation*, Edward Elgar Publishing, Cheltenham, pp. 59-77.

Snezhko, S. and Coskun, A. (2019), "Liability or ethics?: The real value of compliance", *The Circular Economy and Its Implications on Sustainability and the Green Supply Chain*, IGI Global, pp. 198-212.

Tan, A.K.J. (2006), *Vessel-Source Marine Pollution: The Law and Politics of International Regulation*, Cambridge University Press, Cambridge.

Wold, S., Ruhe, A., Wold, H. and Dunn, I. W. (1984), "The collinearity problem in linear regression: the partial least squares (PLS) Approach to generalized inverses", *SIAM Journal on Scientific and Statistical Computing*, Vol. 5 No. 3, pp. 735-743.

Corresponding author

Thea Freese can be contacted at: thea.freese@gmail.com

For instructions on how to order reprints of this article, please visit our website:

www.emeraldgroupublishing.com/licensing/reprints.htm

Or contact us for further details: permissions@emeraldinsight.com